



**RAMA GROUP**



**Celestial City**

• PHASE 2 •



**Thoughtfully Designed  
3-Side-Open Homes**







**RAMA GROUP**

# A Haven Of Excellence, An Abode Of Innovation.

- ✓ Uncompromising quality
- ✓ Supreme comfort
- ✓ Extravagantly lavish
- ✓ Hassle-free service





# BE EVER READY



A Life Of  
**JOY**



A Life Of  
**CONTENT**



A Life Of  
**ONENESS**



A Life Of  
**COMFORT**

Where you are **READY** to lead not just a good life but a heavenly one. A way of life where every generation of a family lives together blissfully in homes with the best layout.



# READY

Convenience At Your Doorstep



## Live A Life Full Of Amazement

- 4 acres of open space
- 40+ amenities
- Designed for every generation
- A flagship project home to 1200+ families
- Spectacular view of sunrise in the east & sunset in the west
- Layout that maintains your privacy
- Optimum light & air ventilation



**BE  
READY**

**TO SCALE  
NEW HEIGHTS**









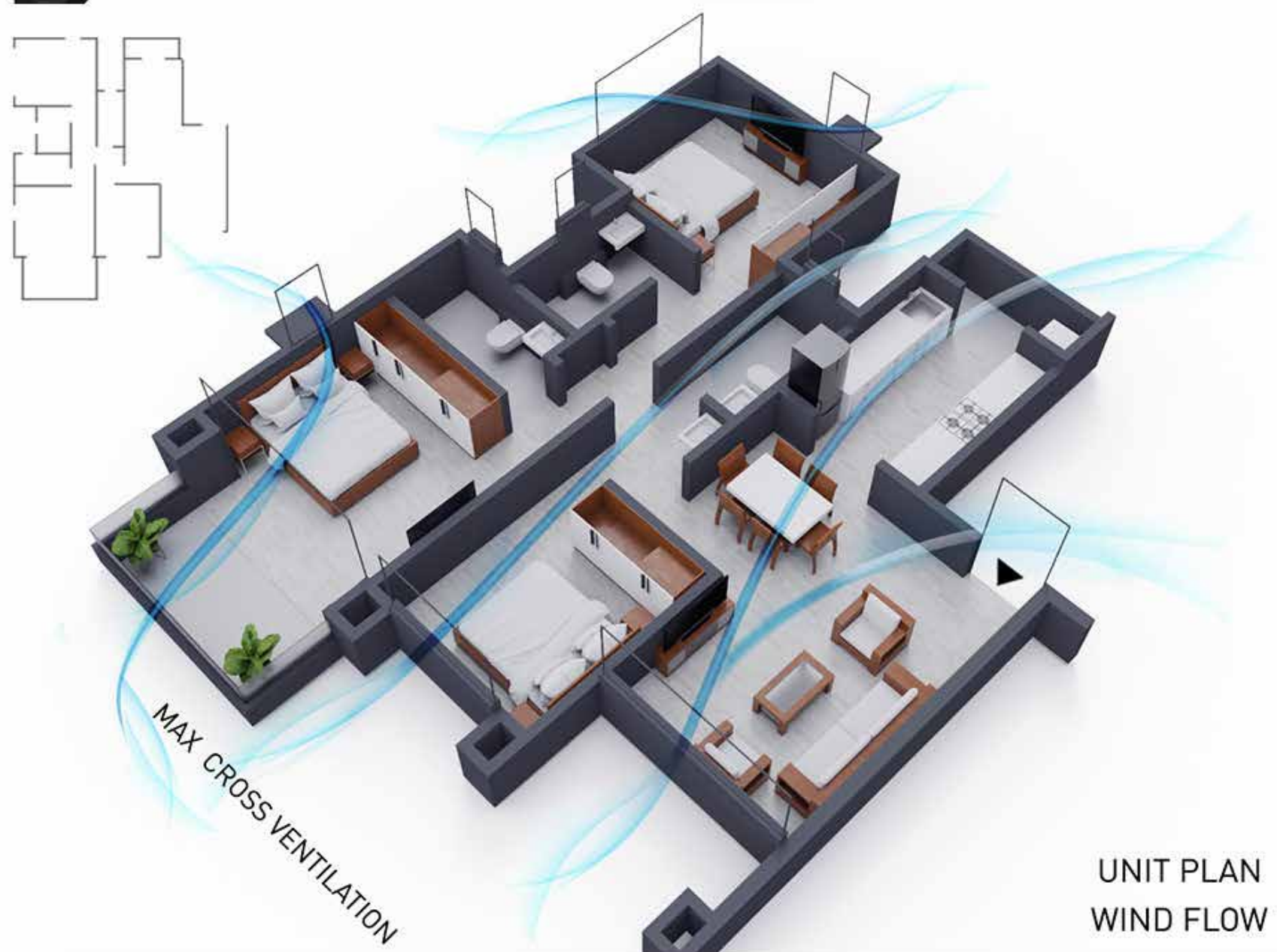




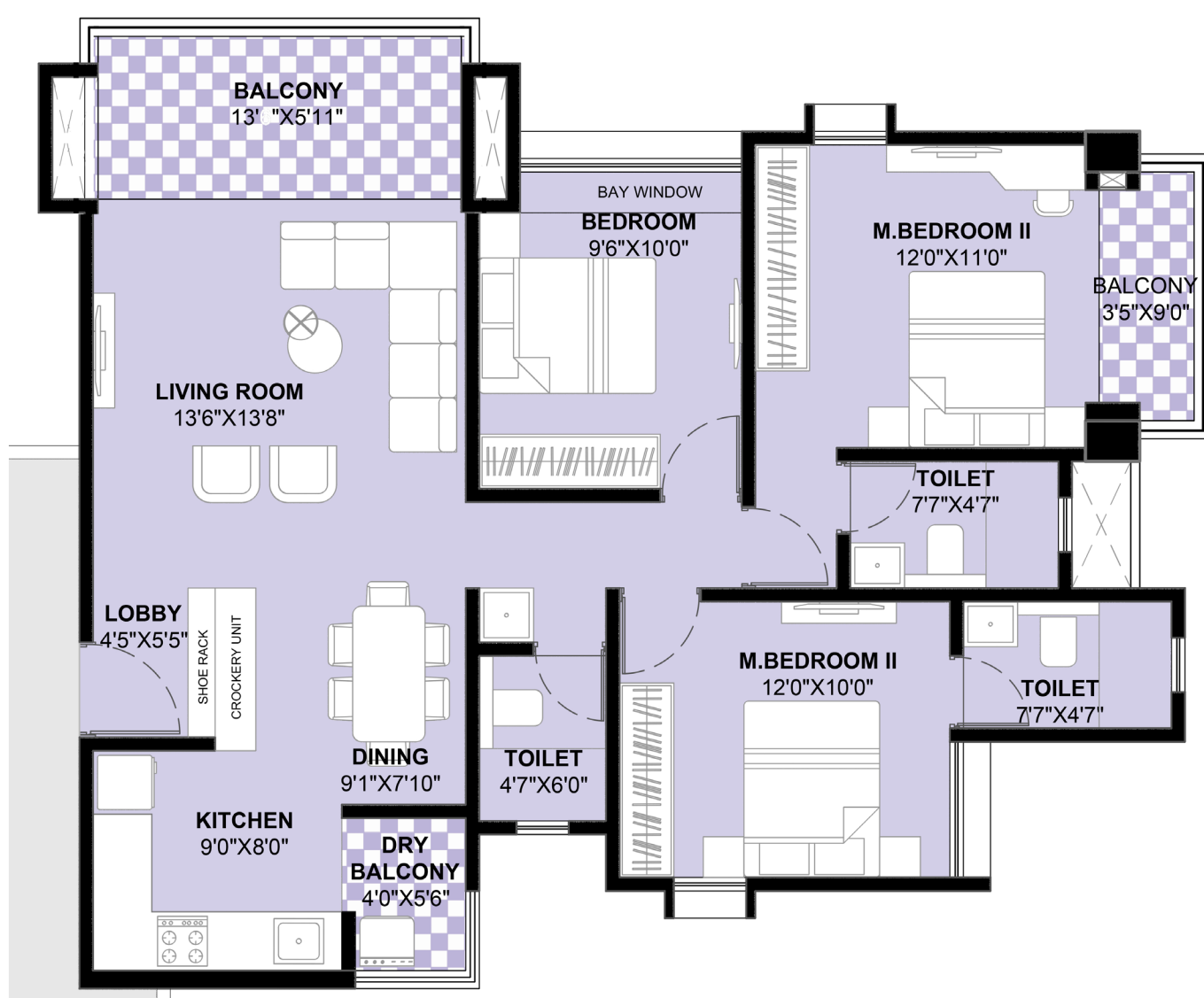
# Most Loved 3 BHK Unit Plans



UNIT PLAN  
DAYLIGHT SHADING



UNIT PLAN  
WIND FLOW

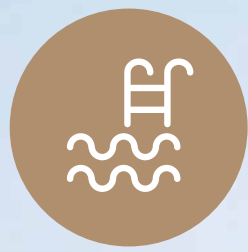


**3BHK : 1.08 Cr.+**  
(All Inclusive)



# 40+

## Multipurpose Amenities



Swimming pool



Club house



Kids play area



Palm garden







# INTERNAL SPECIFICATIONS

## Witness The Flourish Of The Finishing Touch

Top of the line internal specifications to provide a pleasurable living experience.



# BENEFITS OF **READY** POSSESSION HOMES

- ✓ Immediate occupancy
- ✓ No risk of delay in possession
- ✓ Financial savings on interest & taxes
- ✓ Established neighbourhood
- ✓ You buy what you see





# KEY DISTANCES



Malls

---



Shopping centres

---



Hotels

---



Educational institutions

---



Hospitals

---

THAT ARE LOCATED  
JUST A LEISURELY  
STROLL AWAY



# AWARDS & ACCOLADES

10  
Prestigious  
Awards

50+  
Projects  
Delivered

32+  
Years Of  
Experience

12000+  
Happy  
Families

12  
Million Sq.  
Ft. Delivered







# Celestial City

• PHASE 2 •

Delivering Smiles,  
One Family At A Time.



**RAMA GROUP**

📍 Aundh - Ravet BRTS road

🌐 [www.celestialcity.in](http://www.celestialcity.in)



**MahaRERA:**  
**P52100022487**